

# Highland Park Action Coalition Meeting

Heather Marx, James Le  
May 27, 2020



City of Seattle

# Agenda

## West Seattle Bridge (*~10 minutes*)

- Project update
- Neighborhood mobility planning
- Q&A (*~10 minutes*)

## Highland Park Way SW and SW Holden St Safety Project (*~15 minutes*)

- Early design overview
- Q&A and input from neighbors (*~15 minutes*)



# West Seattle Bridge Update

Heather Marx  
May 27, 2020



City of Seattle



# What has changed since March 23, 2020

- Future of the bridge remains uncertain
- Making progress on determining bridge repair or replacement
- Committed to clear communication and transparency throughout



# What we've done since the closure

## On the Bridge

- Installed monitoring instrumentation
- Secured a contractor to complete bridge stabilization
- Continuing to monitor cracking
- Pier 18 repair construction planning



# What we've done since the closure

## On the Ground

- Added six real-time cameras on detours
- Adjusted signal timing at 26 intersections
- Installed three dynamic message signs to display travel times via West Marginal Way
- Installed a temporary signal at Highland Park Way SW and SW Holden St
- Repaved the 5-way intersection west of the Spokane Street/Low Bridge





# What we've done since the closure

## In the Community

- Held 20+ stakeholder group meetings
- Completed our emergency response plan with partners
- Communicated regularly through our website, blog, emails lists, and media
- Implemented Stay Healthy Streets



# What's next

- Repaving Roxbury between 16<sup>th</sup> and 18<sup>th</sup> Avenue (May 28 & 29)
- West Marginal Way improvements
- Ongoing signal adjustments along detour route
- Preparing for Pier 18 work
- Initial meeting of Community Task Force and Technical Advisory Panel
- Continued meetings with neighborhoods, organizations, stakeholders



# Community Task Force and Advisory Panel

## West Seattle Bridge Community Task Force

- Approximately 40 individuals
- Includes elected officials and representatives from West Seattle Businesses, regional neighborhood groups, industrial and maritime businesses

## Technical Advisory Panel

- Composed of independent experts with leading experience in bridge design and construction (particularly concrete construction), geotechnical engineering for bridge structures, and marine/maritime expertise.
- Will be convened at key milestones in the process



# West Seattle Bridge - Neighborhood Mitigation Strategies

- List of ideas generated from you, SDOT staff, and existing transportation and neighborhood plans (i.e. Bike Master Plan, Transit Master Plan, Freight Master Plan)
- Focus on “Quick build” projects that could be implemented in less than one year
- Cost for each project is approximately or less than \$100K
- Neighborhood priorities needed to inform traffic mitigation commitments



# West Seattle Bridge - Neighborhood Mitigation Strategies

- **Week of June 8:** Share with community
- **Week of July 2:** Community provides prioritized list to City
- **Week of July 17:** City folds community priorities into mitigation plans
- **Late July:** Follow-up discussions with neighborhoods
- **August:** Action plan and timeline set

# Actions you can take

## Visit West Seattle Bridge Website

- [seattle.gov/transportation/westseattlebridge](https://seattle.gov/transportation/westseattlebridge)
- Click "Subscribe Now" button to get email updates about the bridge
- Browse reroute maps, FAQs, in-depth stories about the bridge and action plans, and more

## Ask Questions

- [684-ROAD@seattle.gov](mailto:684-ROAD@seattle.gov)
- 206-684-ROAD
- **Sign Up for AlertSeattle**
  - [alert.seattle.gov](https://alert.seattle.gov)
- **Start Planning for Post “Stay Home, Stay Healthy”**
- **Encourage Others to Follow Low Bridge Restrictions**



# Questions / Discussion

Director of Downtown Mobility, Heather Marx

[www.seattle.gov/transportation/WestSeattleBridge](http://www.seattle.gov/transportation/WestSeattleBridge)



# Parameters around the capital project and bridge-related projects

## Highland Park Way SW and SW Holden St Safety Project

- Location specific
- Fully funded and scheduled to start construction in 2021
- Improvements at intersection and bicycle facility to West Marginal Way
  - Traffic signal, not roundabout

## West Seattle Bridge Neighborhood Mitigation Strategies

- Area includes Highland Park, Roxhill, South Delridge, and Riverview
- In planning stage
- Community will prioritize list
- Improvements
  - \$100K or less each
  - Can be completed in less than 12 months



# Highland Park Way SW and SW Holden St Safety Project

James Le

May 27, 2020



City of Seattle



# Project goals

- Improve safety for **ALL**
- Identify neighborhood traffic issues
- Make traffic signal at Highland/Holden **permanent** with new curbs and sidewalks
- Provide bicycle facility between Duwamish Trail and Highland Park
- Opportunities for public input



# Background

- Major route into/out of West Seattle
- +20,000 people walking/rolling, biking, and driving through intersection every day
- Sightline issues (11% grade)
- Serves Metro route #131
- Multi-use path east side of Highland Park Way SW
- Funded by Mercer Megablock proceeds and Move Seattle



**Temporary traffic signal at Highland/Holden  
installed April 2020**



# Crashes

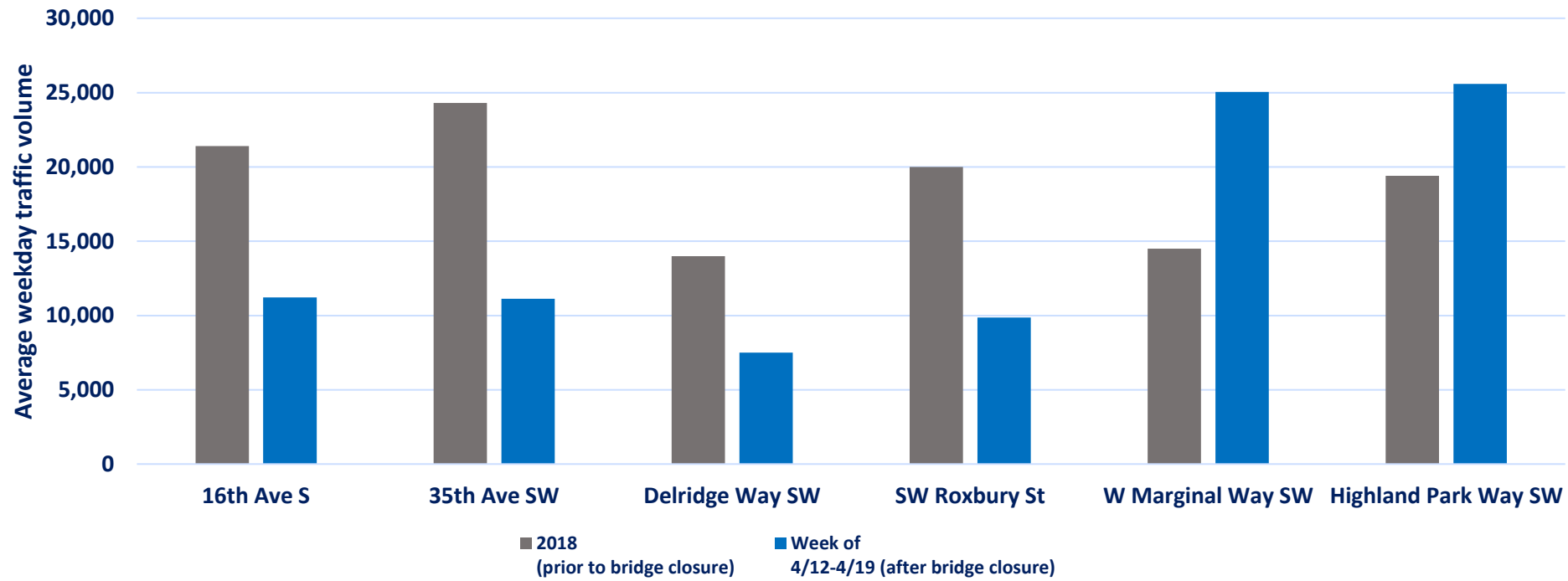
- **195 total crashes** within the last 5 years (2015-2019)
  - 4 pedestrian
  - 3 bicycle
  - 6 serious injury
  - 1 fatal



# Traffic volumes

Traffic volumes along Highland Park Way SW and W Marginal Way SW have increased since bridge closure

West Seattle traffic volumes before/after bridge closure



# Speeds

- Recent speed studies were collected December 2019
- Speed cushions/humps can reduce vehicular speeds
  - May impact emergency response
  - May increase noise levels
  - Not installed where roadway slope is greater than 8%
  - Typically installed where vehicular speeds are +5 mph over speed limit

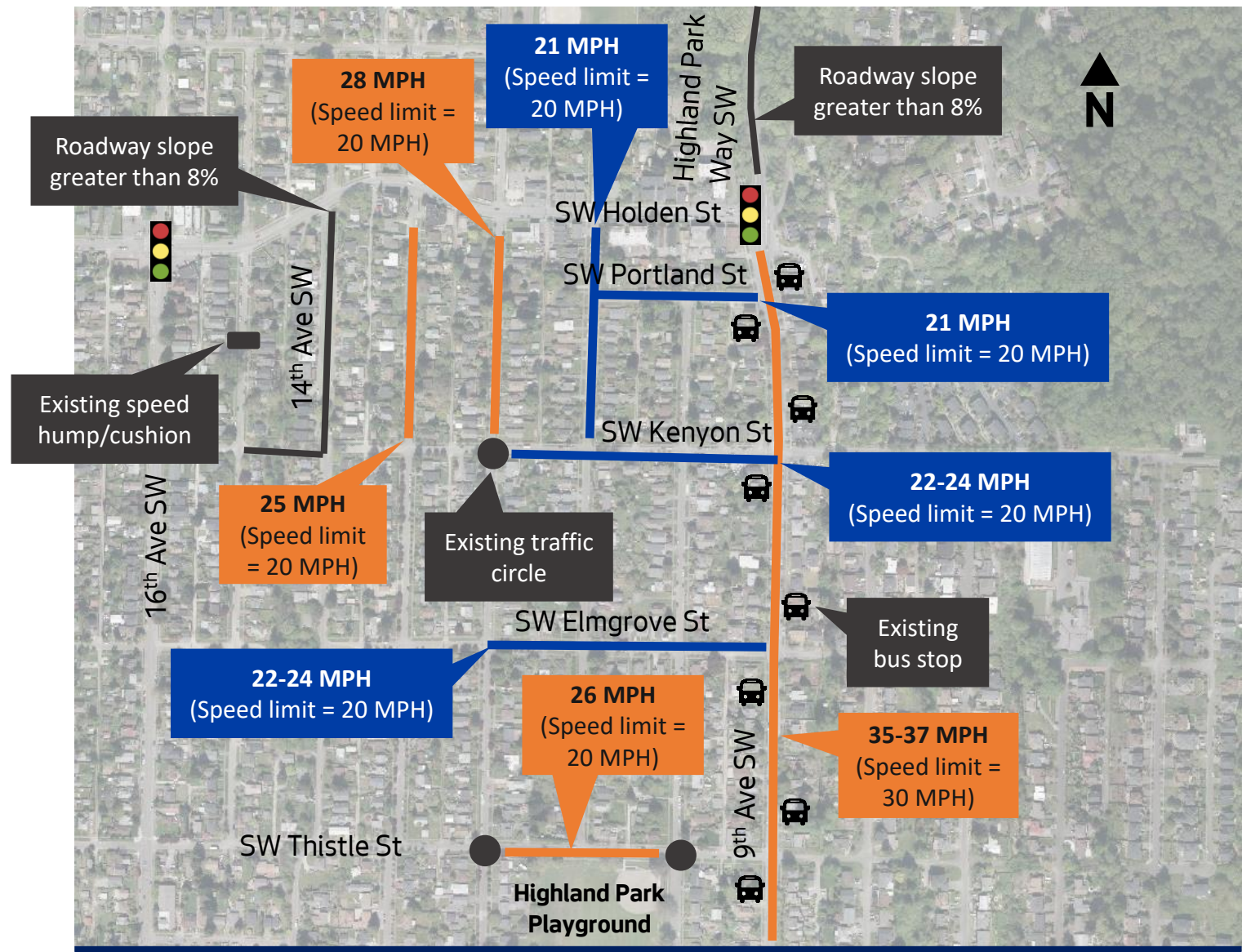


**Speed cushions near 16<sup>th</sup> Ave SW/SW Myrtle St for Sanislo Elementary School (“Your Voice, Your Choice” and Safe Routes to School)**



# Speeds

- Vehicles are traveling +5 mph over speed limit for segments shown in **orange** - speed hump/cushions will be installed
- Vehicles are traveling less than 5 mph over speed limit for segments in **blue**

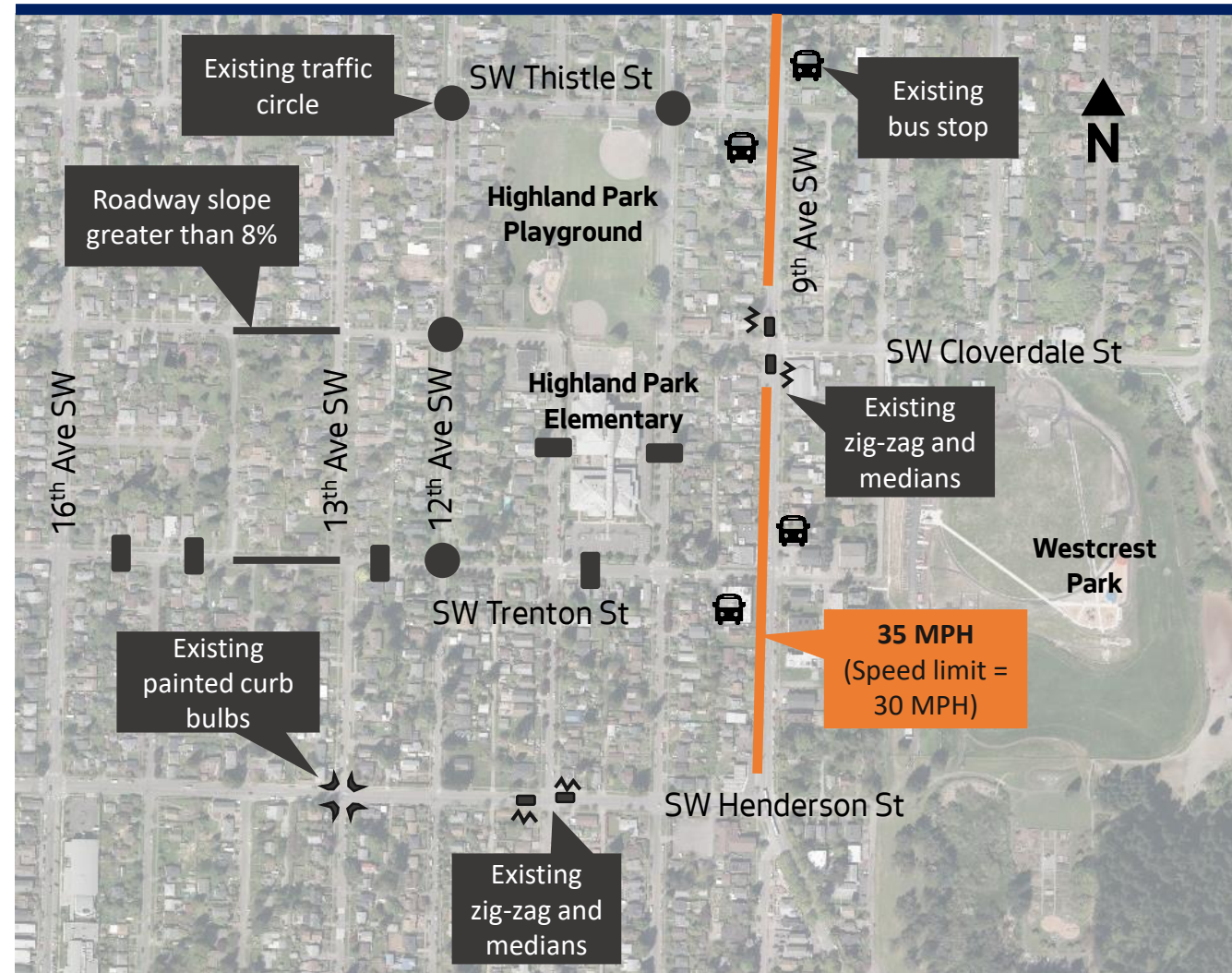


See next slide for Highland Park south

# Speeds

- Many traffic calming measures have been installed by Safe Routes to School and Neighborhood Greenways
- Greenways evaluating for additional traffic calming in this area
- Vehicles are traveling +5 mph over speed limit for segments shown in **orange** - speed hump/cushions will be installed

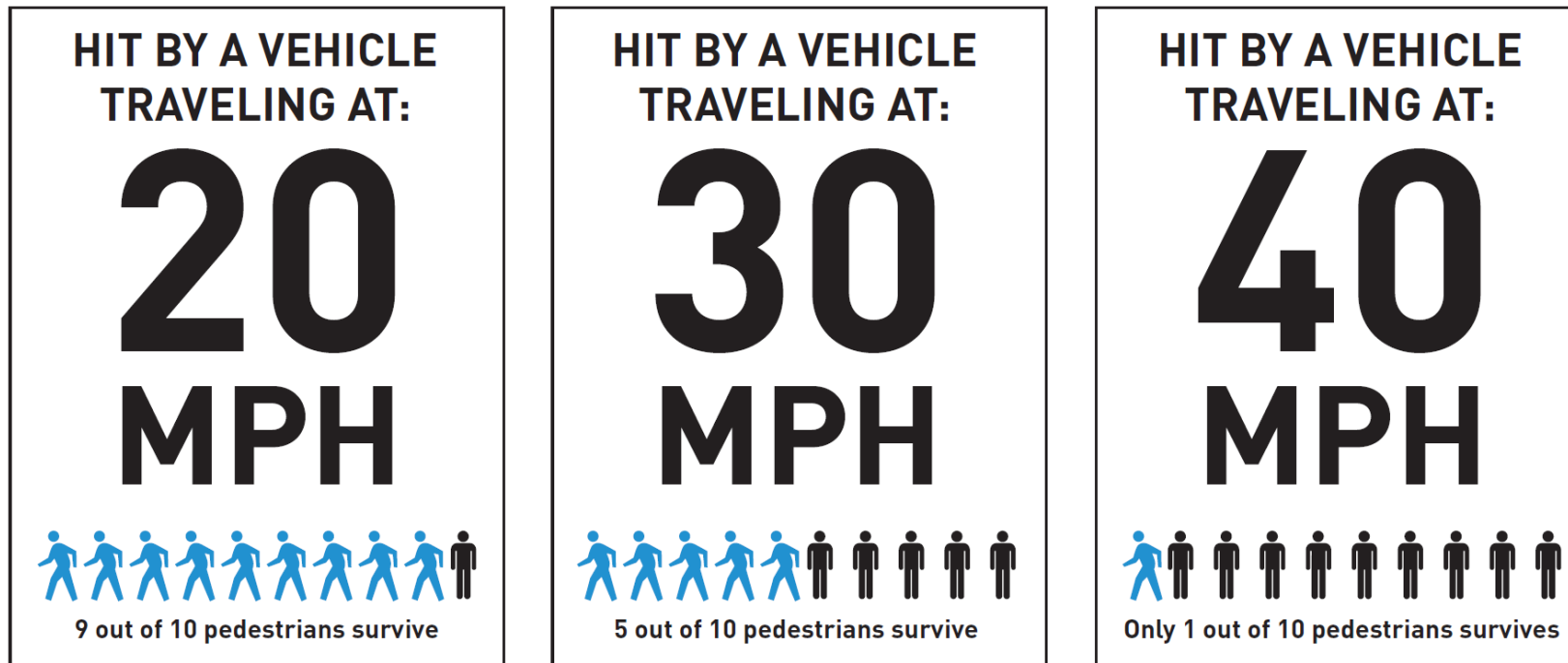
See previous slide for Highland Park north





# Why speed matters?

- Speed is *the* critical factor in the frequency and severity of a crash
- Key part of Vision Zero's efforts



# What we've heard

- Neighborhood cut-through traffic
- Crossing improvements along 9<sup>th</sup> Ave SW
- Provide left-turn signal phasing at 16<sup>th</sup> Ave SW & Holden and Highland & Holden
- Increased pavement friction uphill on Highland Park Way SW
- Bike facility between Duwamish Trail and Highland Park neighborhood
- Turning from non-arterial streets into SW Holden St
- No rechannelization for bike lane



Highland Park Way SW looking south



# Short-term improvements

- Temporary traffic signal (completed April 2020)
- Left-turn lanes at 16<sup>th</sup>/Holden
- Traffic calming elements (Phase 1) being designed:
  - Reduce speed limit to **25 MPH**
  - Parking lane lines and painted curb bulbs along 9<sup>th</sup> Ave SW
  - Speed humps/cushions
  - Radar speed signs



Zig zag treatment at 9<sup>th</sup> Ave SW & SW Cloverdale St



# Proposed improvements

- Permanent traffic signal at Highland/Holden with left-turn phasing
- Concrete curb bulbs and sidewalks
- Widening existing path on east side of Highland Park Way SW
- *Neighborhood traffic calming (Phase 2)\**
- *Southbound protected bike lane (re-evaluate when traffic volumes normalize)\**

\* Evaluated as more data is being collected

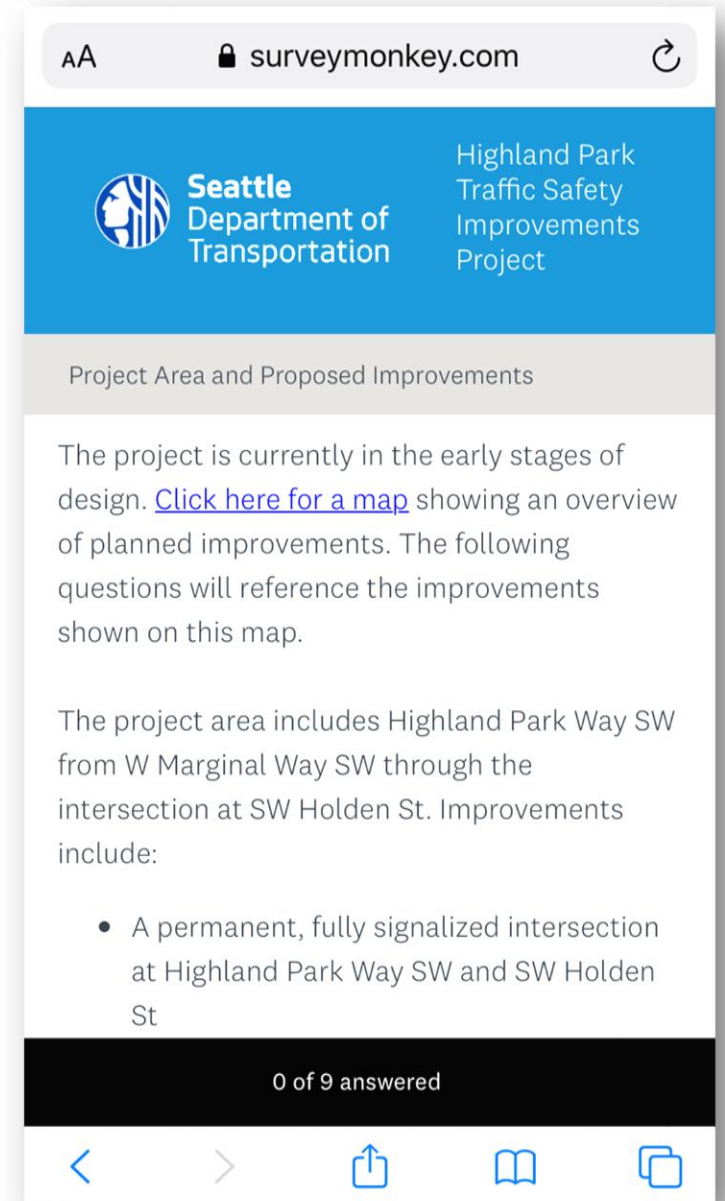


# Please take our survey!

[www.surveymonkey.com/r/highlandholden](https://www.surveymonkey.com/r/highlandholden)

Translation services available (206) 727-8697

Provide input by **May 31<sup>st</sup>**



# Next steps

What is happening	When
Issues identification meeting	May 2020
Design update and review meeting	Fall 2020
Implement neighborhood traffic calming	Q4 2020
Construction	Q4 2021
Evaluation	Ongoing



# Questions / Discussion

Project Developer James Le

[www.seattle.gov/transportation/HighlandParkSafety](http://www.seattle.gov/transportation/HighlandParkSafety)

